

the creamery

live.work.play in Richmond, Vermont

In the heart of the bucolic Richmond, a new environmentally sustainable mixed use development has launched. It will offer businesses, individuals and families opportunities to live, work and play on the main street of a quaint Vermont village that is minutes from Burlington, the mountains and all major transportation. Living the Vermont life has never been more accessible.

14 Energy Efficient Apartments Long Term Rentals Only Available March 1, 2020

Amenities



Green Building



Fiberoptic Internet



Solar Powered



Storage Unit



Secure Entry



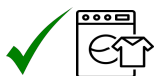
Recycling Composting



Trash Removal



Elevator



On Site Laundry



Oven



Individual Heat & AC



Fridge



Microwave

Coming Summer 2020



Community Garden

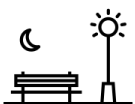


On site Gym



Outdoor Grill

Nearby



Park
.5 Miles



Biking Trails
.5 Miles



Winter Sports
1 Mile



Highway
3 Miles



Int'l Airport
14 Miles

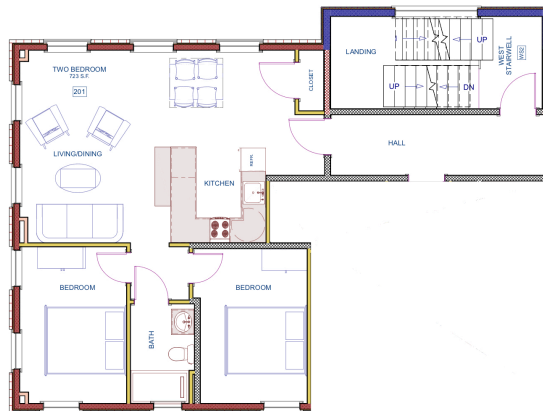
Available March 1, 2020

#201

2 Bedroom and 1 bath apartment
Large windows on South, North
and West side

\$1,995 per month includes:

- Water & Sewer
- Trash, recycling & plowing
- Storage unit



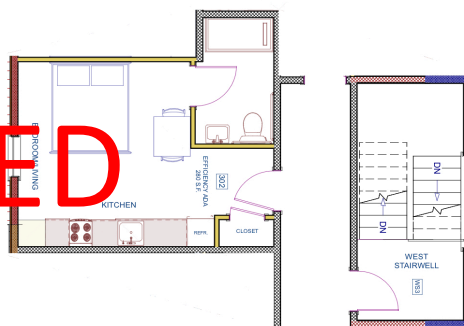
#202

Small studio.
ADA complaint

\$ 850 per month includes

- Water & Sewer
- Trash, recycling & plowing
- Storage unit

RENTED

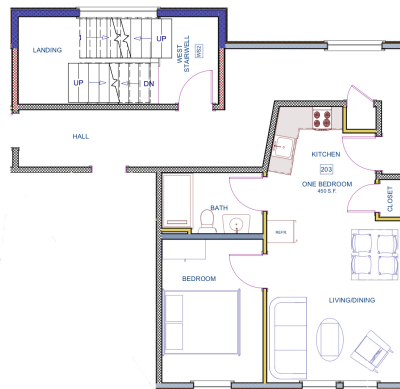


#203

One Bedroom

\$ 1550 per month includes:

- Water & Sewer
- Trash, recycling & plowing
- Storage unit

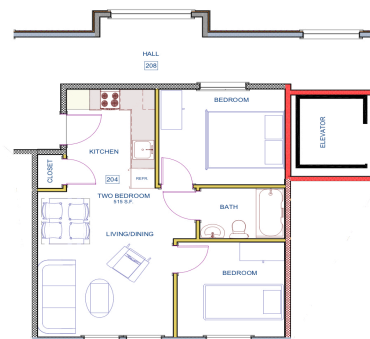


#204

2 Bedrooms
1 bath

\$ 1,650 per month includes:

- Water & Sewer
- Trash, recycling & plowing
- Storage unit



Available March 1, 2020

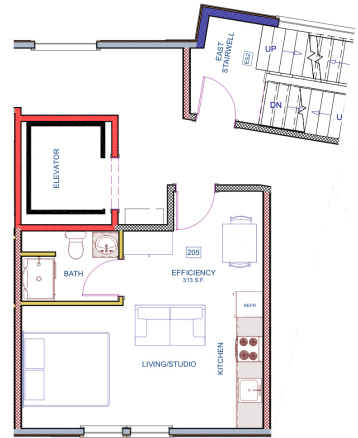
#205

Studio
1 Bath

\$1050 per month includes

- Water & Sewer
- Trash, recycling & plowing
- Storage unit

RENTED

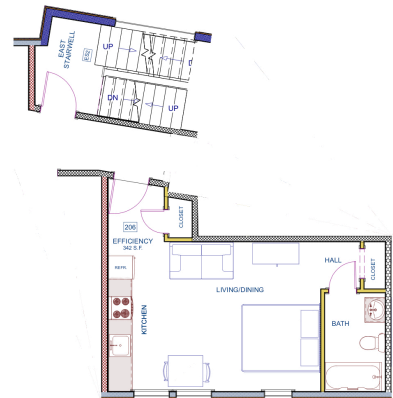


#206

Studio with large windows
1 bath

\$ 1,350 per month includes:

- Water & Sewer
- Trash, plowing
- Storage unit

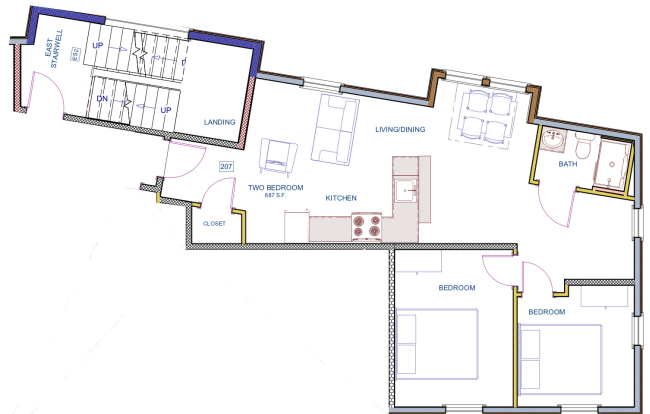


#207

Two Bedroom
1 bath

\$ 1,895 per month includes:

- Water & Sewer
- Trash, plowing
- Storage unit



Application Process:

- Download application at richmondcreamery.com/residential
- Submit Rental Application
- References required and will be checked.

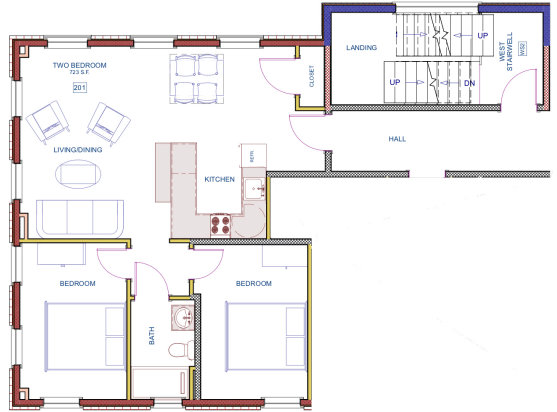
Available March 1, 2020

#301

2 Bedroom and 1 bath apartment
Large windows on South, North
and West side

\$1,995 per month includes:

- Water & Sewer
- Trash, recycling & plowing
- Storage unit



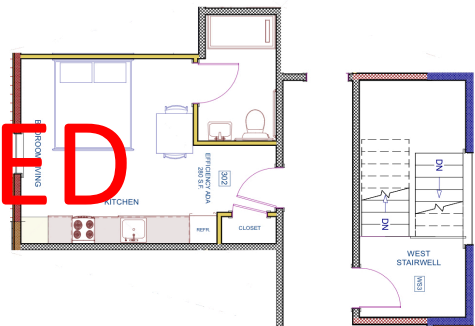
#302

Small studio.
ADA complaint

\$ 850 per month includes:

- Water & Sewer
- Trash, recycling & plowing
- Storage unit

RENTED

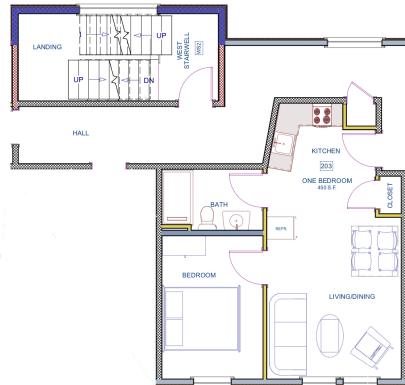


#303

One Bedroom

\$ 1550 per month includes:

- Water & Sewer
- Trash, recycling & plowing
- Storage unit



#304

2 Bedrooms
1 bath

\$ 1,650 per month includes:

- Water & Sewer
- Trash, recycling & plowing
- Storage unit

RENTED



Available March 1, 2020

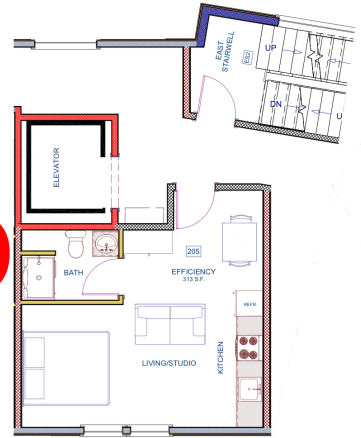
#305

Studio
1 Bath

\$1050 per month includes:

- Water & Sewer
- Trash, recycling & plowing
- Storage unit

RENTED



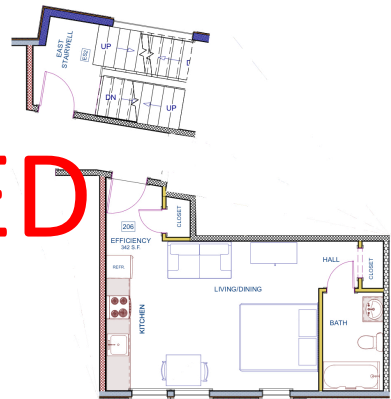
#306

Studio with large windows
1 bath

\$ 1,350 per month includes:

- Water & Sewer
- Trash, plowing
- Storage unit

RENTED

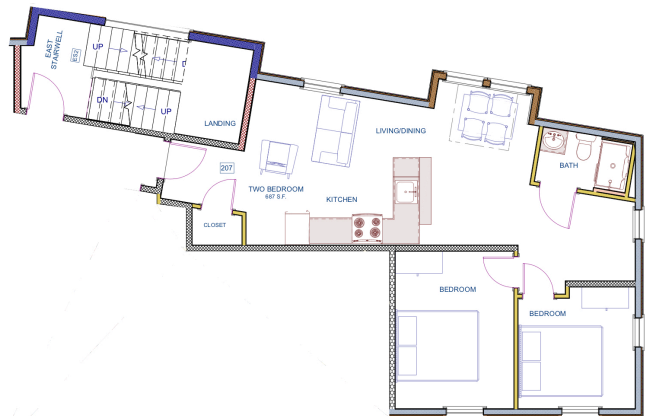


#307

Two Bedroom
1 bath

\$ 1,895 per month includes:

- Water & Sewer
- Trash, plowing
- Storage unit



Application Process:

- Download application at richmondcreamery.com/residential
- Submit Rental Application
- References required and will be checked.